

## One Step Process for Ultra Precision Casting

*“In jewelry or other industries, the part needs to be precise. Customers don’t want to cast parts that need fixing afterwards.”*

Christian Müller CEO – Horbach, GmbH

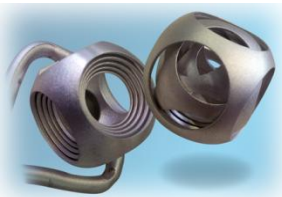


“The most important thing is for our customers to know the castability. *With the SolidScape 3Z Pro it’s perfect,*” according to Christian Müller, CEO of Horbach GmbH.

Horbach’s one-step casting process was put to the test recently with the demanding challenge to create a finished silver object consisting of 5 nested, moveable spheres.

### Project Specifications

Model Diameter:	<b>0.8 inches</b>	Wall Thickness:	<b>0.28 inch (per sphere)</b>
Distance Between Spheres:	<b>0.195 inches</b>	Metal:	<b>Silver</b>
3D Printer:	<b>SolidScape 3Z Pro .0127mm Z axis resolution</b>	Materials:	<b>3Z™Model 3Z™Support</b>



“We have cast from aluminum, brass, bronze, nickel and precious metals from the wax cores, all with excellent surface finish and accuracy,” states Christian. “We believe that the quality of the parts is now the best in the world. Successfully casting this object was only possible with SolidScape.”

### Superior Casting Properties

3ZModel material is SolidScape’s most durable material ever with a 23% strength improvement over plusCAST® and over 50% stronger than previous generations.

This increased durability enables designers to incorporate even more intricate details with thinner walls into their work to produce lighter weight finished products.

- 100% Castability with no material shrinkage
- Organic compound with wax-like properties
- Clean burnout during casting process – no residual ash



**Customer Profile:** Horbach GmbH offers one of Europe’s premier casting services and is based in Idar-Oberstein, Germany. **Website:** [www.horbach-technik.de](http://www.horbach-technik.de)

SolidScape®, Inc. is the leading manufacturer of high-precision 3D printers, materials and software for Rapid Prototyping and Direct Manufacturing, able to print wax models designed in CAD for direct casting applications.

SolidScape®, Inc. | 316 Daniel Webster Highway, Merrimack, NH 03054-4115 USA | [www.solid-scape.com](http://www.solid-scape.com)